



Brandon Public Library

JANUARY newsletter

WINTER WEATHER POLICY

Safety is very important. Per our policy, we will close the library if the public schools in the area close. Sometimes we will close even when schools have remained open if it is predicted to become unsafe during the late afternoon/evening.

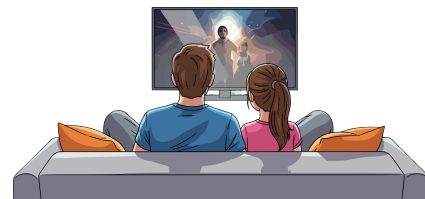
We will announce if we close on Facebook, our Facebook name is "Brandon Library". Of course, always use your common sense as well...if the roads seem unsafe — stay home. We don't want staff or patrons in any unsafe conditions.

SPEED PUZZLE CHALLENGE

- **January 26 at Pillar & Vine from 5:30 - 8:00p**
- REGISTRATION REQUIRED and it fills up fast..
- Teams up to 4 adults (kids can join), space is LIMITED.
- How it works: Teams are assigned a 1000-piece puzzle. Teams have 150 minutes to complete the puzzle. The winner will be the first team to finish or, if no puzzles are completed, the team with the fewest puzzle pieces remaining. Prizes awarded to the first- and second-place teams.
- There is no cost to register. The Friends of the Brandon Public Library sponsor this event. Please consider donating to the Friends Group.
- We will have plates available to help sort pieces. Teams may also bring their own sorting trays.



*Pillar & Vine:
347 S Woodward St,
Brandon*



DID YOU KNOW

Interested in a streaming service movie or TV show? Check out a library Roku. A device to plug in your TV to access library purchased streaming services, including Netflix, Hulu, Paramount+, Disney+, Peacock, Prime Video, and more. Connect one of the library's Roku devices to your TV and home Wi-Fi, then binge-watch to your heart's content! Rokus check out for three weeks and, as long as you bring it back on time, the service is absolutely free! Stop in and ask staff for details. Staff can use the Library TV to show you how it works. (Must be 17 years or older to check it out | late, damaged, and lost fees apply)

If you don't have home Wi-Fi—checkout our Wi-Fi hotspot. Get internet where US Cellular service can be found. **Device and paid streaming services made available through the Friends of the Brandon Public Library.**